

Twickenham & Richmond Tribune



Contents

TickerTape:

South Western Railway

The Tree Agency

Local Picture Postcard Column - The River Between Richmond And Twickenham

Alan Winter

Crusader Travel

International Holocaust Day

Doug Goodman

Council Reports: Policy Performance and Review Board

James Knight

New community mural at Barnes station

Community Rail Partnership

Next week at Richmond Council

Council Reports: Finance, Policy and Resources Committee

James Knight

The Real Junk Food Project

Some planning services unavailable during system upgrade works

Richmond Council

Calling all female players to kickstart your football journey

Swans FC

Join the fun at ETNA's Pop-Up Youth Fridays

ETNA Community Centre

The Death of the Richmond Progressive Alliance?

James Knight

Friends of Kneller Gardens AGM

Twickers Foodie - January Food and Drink News

Alison Jee

Twickers Foodie - Crumbs: A Veritable Baking Bible!

Alison Jee

Sunborn, Gibraltar - Valentine's Package

Old but Young?

Deep Patel

Mark Aspen Review: 13 Days

Mark Aspen

Mark Aspen Review: The Anniversary

Polly Davies

Alan Ayckbourn's TABLE MANNERS

Richmond Shakespeare Society

British Beekeepers' response to announcement on neonicotinoid

British Beekeepers

Chelsea Foundation Coaching & Development Students Support Reece James Cup

St Mary's University

47,000 young people to benefit from Big Bang at School Blueprint

The Big Bang

Join in the RSPB Big Garden Birdwatch

British Garden Centres

Donate your pre-loved items to FARA

FARA

Six Nations Fixtures

RFU

England Men Return To York To Host Open Training Session

RFU

Match Preview: Crystal Palace v Brentford

Brentford Football Club

Covid

Teresa Read

Ministers in Davos to spotlight UK's investment

HM Treasury

Editors: Berkley Driscoll, Teresa Read

TickerTape - News in Brief

South Western Railway

Altered train services and buses replace trains in the Wimbledon area **Saturday 25 and Sunday 26 January**

The lines in the Wimbledon area will be closed all weekend due to maintenance work.

Some services from London Waterloo via Richmond will also be affected.

Saturday

- **London Waterloo to Shepperton** services will be **revised** and will be diverted between **Clapham Junction and Kingston via Richmond.**
- **London Waterloo to London Waterloo via Wimbledon and Kingston** services will **not** run.
- **London Waterloo to Hampton Court** services will **not** run.
- **London Waterloo to Windsor** services will be **revised.**
- **Buses will run between:**
Clapham Junction and Hampton Court via Surbiton (buses will not call at Berrylands)

Sunday

- **London Waterloo to Shepperton** services will be **revised** and will be diverted between **Clapham Junction and Fulwell via Richmond.**
- **London Waterloo to London Waterloo via Wimbledon and Kingston** services will **not** run.
- The afternoon and evening **London Waterloo to Kingston via Hounslow** services will **not** run.
- **London Waterloo to Hampton Court** services will **not** run.
- **Buses will run between:**
Clapham Junction and Twickenham via Wimbledon and Kingston
Clapham Junction and Hampton Court via Surbiton (buses will not call at Berrylands)



The Tree Agency

darryl parkin

The Treehouse
25 King Edwards Grove
Teddington, Middlesex TW11 9LY
Telephone 020 8274 0107
Mobile 07960 123580
Fax 020 8274 0119
info@thetreeagency.co.uk
www.thetreeagency.co.uk

Local Picture Postcard Column - Part 285

The River Between Richmond And Twickenham

By Alan Winter

This is an interesting postcard that came my way recently. It was posted 115 years ago in 1910. I could tell where the photograph was taken from given the houses on Richmond Hill in the central background. The buildings themselves facing the river were a bit of a puzzle. The postcard itself was published and photographed by Richard Young and Co. of Teddington High Street who were very active in that period and produced top quality photographic postcards of our local area for a period of about 20 years before, during and after the first world war.



This particular photograph was taken from the Middlesex bank looking towards Richmond Bridge and the photographer was standing at the beginning of the curve on the Warren (Name of towpath) just as Marble Hill Park ends to the left.

I floated the question on the Twickenham and Teddington Facebook site and must thank the following for filling in the gaps around these buildings.

Peter Loy, Stanley Stanley and Geoffrey Jardine came up with the answers: The main building in the middle displays the high sign as E. Messum and Sons Launch and Boat Builders. It was apparently originally known as The Lansdowne Boathouse. The building to the right was the Three Pigeons Pub. A former Watney riverside pub. The pub was badly damaged by fire in 1994 and was derelict for many years until it was finally demolished. Today the site exists as riverside housing.

Frances Wetherall provided an update: That whole stretch was bought by Watneys and subsequently sold to a property developer. Richmond Canoe Club moved from the old barrel stores (single storey boathouses to the left on the postcard) to the main Messums Boathouse so that the development could be started. Further developments followed including the mysteriously destroyed Three Pigeons Pub in 1994 and adjoining boathouses. Richmond Canoe Club remains in the boathouse although the top floor is now a luxury apartment.

The Messum family were significant business people in the 19th and 20th Centuries in Twickenham. In fact Richard Henry Messum was the landlord of the Three Pigeons Pub in 1896 when its address was at 87, Petersham Road. Our second postcard this week shows The Three Pigeons Pub in the 1940's /1950's. This shot was taken from the Petersham Road with Richmond Bridge in the background.



Back in the 1960's as a teenager, I worked for Messums the Builders in Grosvenor Road, Twickenham as a labourer for some months before I headed off to Cornwall for a while. About the same time I was a friend of George Edwards who happened to be the son of the then landlord of the Three Pigeons Pub. Who would have guessed that coincidentally they would both get name-checked in a column I was to write in 58 years time! Funny old world....

With nearly 300 weekly columns behind me in the Tribune I am beginning to run out of postcards of our local area that I haven't already written about. So, my search for old postcards continues. I am always looking for old postcards and old photograph albums etc. The postcards can also be British or Foreign, black and white or coloured and of places or subjects. If you have any that are sitting unwanted in a drawer, in a box in the loft or in the garage or under a bed, please contact me on 07875 578398 or alanwinter192@hotmail.com I would like to see them and I pay cash!

CrusaderTravel

020 8744 0474

crusadertravel.com

Escapology Experts

info@crusadertravel.com



Your friendly local Travel Agency
established in Twickenham since 1966

With over 50 years experience we pride ourselves on being able to offer an unrivalled service with attention to detail. Come and have a chat with us in our cosy office off the Church Street Square, we are open 6 days a week from 11am until 6pm (Closed Sunday)



International Holocaust Day

On Monday Commemorations Will Be Held To Remember The Victims Of Nazi Concentration Camps
Doug Goodman recalls a memorable visit to Poland

Eighty years ago on 27th January 1945 the first of the Nazi concentration camps was discovered and liberated by the Soviet Army as they advanced westwards through Poland. The troops experienced utter horror when they entered Oswiecim or Auschwitz, one of the largest and most notorious camps set up for the extermination of Jews, political opponents, Gypsies and a host of people the Nazis wanted to wipe out. The camp, a former army barracks, was quickly transformed in 1941 into a prison camp with blocks, which were built to accommodate 300 soldiers and now housed 1000 deportees when the first trains arrived in March 1942. Of the estimated six million who perished in the many extermination camps, over a million died in Auschwitz and nearby Birkenau. International Holocaust Day also remembers those who suffered in Cambodia, Rwanda, Bosnia and other countries.

Distressing Visit

A day in Krakow drinking in the open air cafes in Rynek Glowny, the historic main square and exploring Kazimierz the Jewish Quarter, was in stark contrast to a trip to Auschwitz. My guide said that everyone should visit the death camp some 50 kms from Krakow. On the bus journey the passengers were animated while discussing what they might see and experience. On the return the atmosphere was sombre and very quiet with everyone thinking about the horrific sights. The railway terminus, the watch towers, the barrack blocks with wooden 'beds' and the wire surrounding the camp were grim reminders of confinement. At Birkenau, the displays of abandoned luggage, piles of shoes, spectacles, human hair, the execution wall and pictures of many victims were extremely distressing. It was an experience that made me wonder how such atrocities could have been committed and continue to take place. Then it was back to exploring the medieval sites in Krakow and enjoying the lively night atmosphere. But nobody could forget what they had experienced that day at Auschwitz and Birkenau and on Monday we should remember the events of 80 years ago.



Krakow. Rynek Glowny



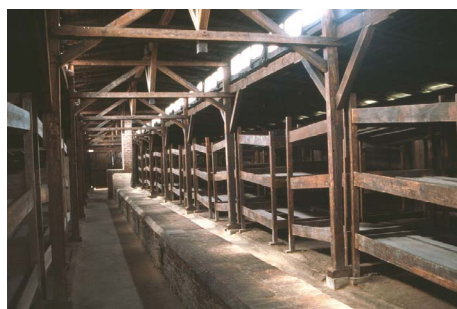
Kazimierz, Jewish quarter



Outside the Wire



Execution Wall



Barracks for 1000 prisoners



Entrance to Birkenau



No Escape



End of the Line

Council Reports

Policy Performance and Review Board

By James Knight

20 January 2025—The meeting, chaired by Councillor Richard Warren, presented a sobering snapshot of the borough's progress in key areas based on performance indicators aligned with the council's Corporate Plan. The plan, which stems from the Liberal Democrats' manifesto, outlines a series of commitments to residents. However, critics note that the selected performance indicators are designed to present the council in a favourable light rather than offering an unbiased reflection of its overall performance.

Housing Woes: Government Intervention Looms

The failure to reach housing targets is now becoming one of the council's most significant issues. After years of nimbyism under the Liberal Democrats the number of net new homes has crashed to only 100 last year, falling well short of its annual target of 411. This shortfall has triggered intervention by central government, which has demanded urgent action. The Rt Hon Angela Rayner MP, Secretary of State for Housing, Communities and Local Government is threatening to take over planning powers from the Council so that central Government can push through more housebuilding in the borough, with many fearing this could see the construction of large out of place apartment blocks across the borough.

Opposition to new development is deepening the housing crisis locally. A record number of residents have been placed in temporary accommodation: over 607 people, 14% above the forecast of 534 people. This shows the real social impact of resisting house building on renters.

Disabled Adaptations: Still Falling Short

A particularly troubling issue raised was the halving of major adaptations for disabled residents. Council officers attributed this to delays caused by implementing a new IT system. However, councillors noted this is not a new issue; delays in providing adaptations for disabled people have been a longstanding problem in Richmond. These delays have left vulnerable residents without essential modifications, causing significant challenges for those needing safer, more accessible homes. The council assured attendees that outstanding cases would be addressed before the end of the year, though some questioned whether this timeline was realistic.

Care Services: Under Pressure

The meeting also highlighted the borough's struggles to meet care service targets. More than half of the borough's care leavers aged 19–21 are NEETS (Not in Employment, Education, or Training), severely curtailing their life chances.

Equally troubling was the revelation that 33.6% of children requiring care are placed over 20 miles away from home, the highest percentage recorded since the council began using this indicator. Concerns were raised about the potential psychological and social consequences of placing children so far from their communities.

Environmental Concerns: Recycling and Cleanliness Decline

The council's environmental performance also came under scrutiny, with recycling rates falling by 3.1% and a significant increase in streets with unacceptable levels of litter and detritus. Officers noted that the council has limited influence over the amount of waste generated, but some councillors questioned whether this undermines the relevance of waste-related key performance indicators. Critics felt this was another instance of the councillors wanting to change targets rather than dealing with poor service delivery.

Planning Services: High Demand, Low Satisfaction

Richmond's planning service also faced significant criticism. Resident satisfaction with the service has plummeted from 57% in 2019 to 47% in 2024. Officers pointed to an increase in complex applications and resource shortages, with Richmond processing one of the highest numbers of applications per capita in London.

Delays in planning decisions and poor communication with applicants are key sources of frustration. Councillors called for more precise, consistent metrics to track performance over time and improve communication with the public.

Antisocial Behaviour: Action Needed Beyond Enforcement

Efforts to tackle antisocial behaviour (ASB) across the borough have yielded mixed results in hotspot areas. A new community safety action plan in Mortlake and Barnes has led to arrests, evictions, and closure orders. At Richmond Green, dispersal orders and community engagement efforts have reportedly reduced large youth meet-ups linked to ASB. Residents spoken to state there are still serious issues on Richmond Green with drug dealing, public urination, and disorderly conduct at night.

While enforcement has shown some success, councillors and officers noted that the council's approach needs to focus more on prevention and managing down resident expectations as public open spaces will want to be used by the public. Addressing the underlying causes of ASB, such as social issues and economic pressures, was identified as a key area for improvement. It did feel that the Liberals were trying to make excuses for offenders again – they are known for being soft when it comes to punishing those who break the law, with their conference voting to stop short prison sentences under one year. Officers acknowledged the need for a more comprehensive approach, including collaboration with police, social landlords, and other partners.

Coordination with Social Landlords: Weaknesses Persist

Councillors discussed the broader challenges of coordinating efforts with social housing providers, particularly in dealing with ASB. A newly established Strategic Delivery Group aims to streamline communication between the council, police, and housing associations, but its work is still in its infancy.

School Admissions: Calls to Restrict Choice

Councillor Jonathan Cardy asked for the borough's school admissions arrangements to be added to the work program. He proposed that reviewing these policies could help reduce the long travel distances children have to travel to attend their assigned schools. Long commutes, he noted, are particularly detrimental to vulnerable children and could contribute to the borough's high percentage of children placed far from their homes. Addressing this issue, he suggested, would not only improve educational outcomes but also alleviate the psychological strain on families.

The Government's new Education Act will give new powers to coordinate the admission policies of all schools, including academies and free schools; is this a push to end controversial remote admission for Turing House and Waldegrave Schools? Only time will tell. Locally, many Liberals have been against parental choice and have wanted to have a system where the council allocates school places to ensure a fully comprehensive school system is in place.

The Road Ahead for Richmond

The council faces mounting pressure from residents and central government, sustained effort and innovative solutions will be needed to bridge the gap between targets and delivery. Whether Richmond can rise to the challenge in 2025 remains to be seen. For now, residents will be watching closely, and councillors must ensure that promises turn into measurable progress.

You access the committee papers and view the webcast [HERE](#)

New community mural at Barnes station

From Hounslow and Richmond Community Rail Partnership

A new mural will be officially unveiled at Barnes station on Friday 7 February. It's a beautiful example of collaboration between the Barnes community and Hounslow and Richmond Community Rail Partnership.

Hounslow and Richmond Community Rail Partnership is part of a nationwide network that supports local communities and local railway services across Britain. The partnership is dedicated to supporting community-based groups, volunteers and partnerships that deliver social benefit and connect communities with the SWR stations along the Hounslow Loop comprising of 15 stations in Richmond and Hounslow.

The funding for the mural was provided by SWR and Network Rail through the Hounslow and Richmond Community Rail Partnership, and delivered alongside



the new lifts at the station which were funded via the Department for Transport's Access for All fund.

Inspiration and design work were contributed by local primary schools and community groups, including Lowther Primary School, Barnes Primary School, St Mary Magdalen's Catholic Primary School, FISH Picassos in the Park, Barnes Community Association, Barnes Gardeners, Barnes Common Ltd and local councillors.

Next week at Richmond Council

On Tuesday evening, the **Full Council** meets. The agenda includes (1) public questions, (2) member questions, (3) the new council tax reduction policy, (4) the award of extra council allowances to two members, (5) a motion from the Green Party for the creation of a natural history GCSE exam, (6) a motion from the council leader over policing in the Royal Parks, (7) a motion from Cllr Wilson asking for NHS funding for mental health should be de-linked to health inequality metrics. The meeting commences at 7.00 pm, at York House, Twickenham. For full details, please follow the link [HERE](#)

On Thursday, the **Audit, Standards and Statutory Accounts Committee** will meet to discuss, (1) an update on the 2023/24 accounts, (2) amendments to the committee's term of reference, (3) the Government's consultation on strengthening audits, (4) information about complaints against councillors, (5) member training, (6) internal audit update. The meeting commences at 7.00 pm, at York House, Twickenham. For full details, please follow the link [HERE](#)

Council Reports

Finance, Policy and Resources Committee

By James Knight

The Finance, Policy, and Resources Committee convened on Monday evening under the leadership of Council Leader Gareth Roberts for a marathon session featuring twelve substantive agenda items. With less than ten minutes allocated to each on average, the meeting highlighted concerns that the forum primarily serves to rubber-stamp decisions made by sub-committees in private; something that the Liberal Democrats used to scathingly criticise about in the early 1980s back in David Williams's day. Critics questioned whether such expedited deliberations allow for genuine scrutiny or meaningful public input, casting doubt on the committee's ability to foster true transparency.

Richmond Town Centre Vision: The Richmond Town Centre Engagement report, presented by Planning Engagement Officer Grace Crannuis and Councillor Katie Mansfield, was met with scepticism due to its lack of substantive detail. Critics described the strategy as overly brief and primarily focused on public relations, appearing designed to pave the way for pedestrianisation rather than offer a comprehensive roadmap for the town's future.

Public speaker Martin Barker, who runs the YouTube channel Richmond Council Watch, was particularly critical, asserting that the strategy lacked substance and appeared to have been written by ChatGPT. To illustrate his point, Barker read aloud a strategy he had generated using the AI tool, which bore a striking resemblance to the council's document. His comments underscored concerns that the vision failed to offer concrete solutions or address the practical implications of key proposals.

Key proposals included plans to pedestrianise George Street, which proponents claimed would enhance the shopping experience, reduce pollution, and boost footfall. However, these claims were accompanied by little concrete evidence or detailed planning. Pamela Fleming, representing the Richmond Society, highlighted concerns about traffic displacement to residential streets such as Church Road and Queens Road, calling for in-depth studies to assess the broader impact. The council's commitment to phased trials in the summer and further analysis was seen by some as insufficient to address these significant concerns.

Critics argued that the council's approach emphasised optics over actionable outcomes, leaving many residents questioning whether the strategy truly addressed their priorities or merely served as a vehicle for advancing predetermined anti-car agenda of the Liberal Democrats.

Night-Time Strategy: this was introduced by Councillor Phil Gisler and officer Steve Diamond of Economic Development, it aims to transform the borough's evening economy by creating safer, more inclusive spaces while supporting local businesses and cultural activities. The strategy outlines a comprehensive approach, addressing public safety, accessibility, and diverse programming to attract families, young people, and marginalised groups.

Key elements of the strategy include enhanced lighting and CCTV in high-footfall areas, extended public transport services, and initiatives to activate public spaces with family-friendly evening events. Collaborations with local businesses and cultural institutions are central to the plan, with an emphasis on encouraging evening openings and hosting performances to foster community engagement.

However, the strategy was met with mixed reactions. Councillor Caroline Wren highlighted significant gaps in youth services and public facilities, including the pressing need for accessible toilets. These shortcomings, she argued, undermine efforts to create a genuinely welcoming environment. Other members raised concerns about the feasibility of implementing these initiatives without overburdening local resources or compromising residents' quality of life. It was also evident that the

strategy focused on Richmond at the expense of other towns in the borough – a recurring theme under this administration.

Decarbonisation Strategy: perhaps the most contentious segment of the evening was the Operational Buildings Decarbonisation Strategy. Officer Charles Booth introduced five scenarios aimed at achieving carbon neutrality by 2030, recommending Scenario 5 with its £18.7 million price tag.

Public speakers provided starkly contrasting views. Martin Barker dismissed the initiative as financially and ideologically unsustainable, describing it as a costly exercise in virtue signalling with no guarantee of tangible environmental benefits. Barker criticised the lack of detailed cost-benefit analysis and questioned the broader implications for taxpayers. He also pointed out the absence of historical cost data on buildings already retrofitted under similar programs, arguing that such information could provide critical insights into the strategy's efficacy. Barker further highlighted the initiative's reliance on uncertain external funding, calling it an unrealistic gamble.

Conversely, Green Councillor Chas Warlow urged greater ambition, advocating Scenario 4 despite its higher costs, and argued that Richmond should lead by example in tackling climate change. Councillor Robin Brown emphasised the importance of maintaining the borough's climate action but ultimately supported Scenario 5 as a responsible compromise.

Debt Write-Offs: one notable agenda item was the approval of debt write-offs for the financial year. The Executive Director of Finance outlined the rationale, explaining that the debts in question had been deemed unrecoverable after exhaustive collection efforts. Councillors expressed concern over the cumulative impact of these write-offs on the council's budget but acknowledged the necessity of focusing resources on collectable debts.

The Executive Director of Finance reported that the council had written off £108,099 related to 181 adult social care cases and an additional £1.4 million in council tax debts, encompassing 5,510 cases. Most of these council tax cases involved absconded debtors, with 4,550 instances where individuals could not be traced. Unlike other authorities, Richmond does not take out County Court Judgements on people it cannot trace, something that the councillors need to review, as it appears debtors are exploiting this approach.

Richmond Community Fund: The committee also approved a new round of the Richmond Community Fund, which distributes a slice of the Community Infrastructure Payments that developers must pay to help offset the impact of new developments on the local community.

The changes aimed at streamlining the application process. Assistant Chief Executive Jon Evans emphasised inclusivity and accessibility in grant distribution. A key condition, however, is the vital backing of local ward councillors for any proposed projects. This endorsement is seen as pivotal not only for securing funding but also for ensuring that projects align with the priorities of local communities. Vice-Chair Nancy Baldwin highlighted the proactive role councillors should play in identifying and championing initiatives, encouraging a closer partnership between community organisations and elected representatives.

Twickenham Riverside: notably absent from the agenda was the anticipated approval of the budget for the Twickenham Riverside Development. This item, originally slated for discussion, has been postponed to an unspecified date, leaving stakeholders eager for clarity on how much the borough's most significant project will cost.

You can read the papers for the meeting, and view the webcast, by clicking [HERE](#)

NO REFERRALS NEEDED
CLOSED ON BANK HOLIDAYS

THE REAL JUNK FOOD PROJECT

TWICKENHAM



PLEASE COME TO OUR PAY AS YOU FEEL
COMMUNITY CAFES AND FOOD SURPLUS HUBS

BRING A BAG TO TAKE SURPLUS HOME

MONDAY

11.30AM - 1.30PM ETNA EAST TWICKENHAM
COMMUNITY CAFE & FOOD SURPLUS HUB
2.30 - 4.30 PM LINDEN HALL, HAMPTON
FOOD SURPLUS HUB

TUESDAY

11.00 AM - 12.00PM NOBLE GREEN WINES, HAMPTON HILL
FOOD SURPLUS HUB

11.30AM - 1.30PM HAM YOUTH CENTRE, HAM
COMMUNITY CAFE & FOOD SURPLUS HUB

WEDNESDAY

11.30AM - 1.30 PM ETNA, EAST TWICKENHAM
COMMUNITY CAFE & FOOD SURPLUS HUB

11.30AM - 1.30PM CAMBRIAN COMMUNITY CENTER, RICHMOND
COMMUNITY CAFE

THURSDAY

11.30AM - 1.30PM LINDEN HALL, HAMPTON
TAKEAWAY CAFE & FOOD SURPLUS HUB

FRIDAY

11.30AM - 1.30PM ETNA, EAST TWICKENHAM
COMMUNITY CAFE & FOOD SURPLUS HUB

WWW.TRJFPTWICKENHAM.COM

Some planning services unavailable during system upgrade works

From Richmond Council

From Wednesday 29 January 2025, we will be upgrading our planning system. Some services will be unavailable over a one week period whilst the work is carried out.

The work is due to be completed by Thursday 6 February 2025.

Affected services

Planning, planning enforcement, building control, local land charges, and trees will be affected, resulting in potential delays and slower response times.

Planning

You will be unable to search for, view, or comment on planning applications. Deadlines will be extended accordingly. Details of applications will not be visible through [My Richmond](#) or the [My Richmond app](#). Planning applications can still be submitted through the [Planning Portal](#), but they will not be processed during this period.

Planning Enforcement

There may be a slight delay in our usual service while we upgrade our software. You can continue to use our online form to [report a breach of planning control](#) during this time.

Building Control

Applications submitted from Wednesday 29 January 2025 will not be processed until Thursday 6 February 2025. Deadlines will be extended accordingly. You will still be able to [request site visits](#), and these will be processed as normal.

Local Land Charges

You will be unable to request a local land charges search from 5pm on Friday 24 January 2025, this is so we can clear all requests from the current system before the upgrade period. We will not be able to process any requests during this time.

Trees

You will be unable to search for, view, or comment on an application for tree works to trees subject to Tree Preservation Order or Section 211 notices for trees in Conservation Areas. Applications can be submitted through the Planning Portal, but they will not be processed during this period.

What this means for residents

If you would like to submit a new planning application, you can do so through the Planning Portal, but applications will not be processed until after Thursday 6 February 2025.

If you have an existing planning application, this will be transferred to the new system, which you will be able to access from Thursday 6 February 2025. You will not be able to make comments on planning applications between 29 January and 6 February 2025, however, deadlines will be extended accordingly.

Features of the new planning system

The new planning system will look and function largely the same as the current system.

There are some minor differences in how planning applications can be filtered and viewed. The new system also allows for longer submissions to be uploaded rather than being limited to 4,000 characters. You will also be able to include images as part of your submission.

We welcome your feedback on the new system once it is live. You can submit your comments and feedback to citizensportal@richmond.gov.uk.

You can sign up to receive information on planning and other services including waste and recycling and roadworks by [subscribing to our email updates](#). Thank you for your patience during the upgrade works.



Calling all female players to kickstart your football journey

From Swans FC

Residents aged 18 and above are invited to join local football club Swans FC for free taster sessions across venues in Twickenham, Richmond, Barnes, Kew, and more.



Swans FC is offering a fully inclusive football experience to female players. Whether you've never played before or have played in the past, participants can learn and play football in a fun and welcoming environment. It's a great way to meet new people while promoting your mental and physical health.

A typical session will involve some warm-up activities and specific practices to help with technique, followed by some informal matches.

To join a free session, [register now](#).

Join the fun at ETNA's Pop-Up Youth Fridays

From ETNA Community Centre

If you're between 11 and 14 years old and live around East Twickenham, come along to the ETNA Community Centre for their Pop-Up Youth Friday sessions starting this Friday 24 January.

Try your hand at table tennis, indulge in snacks and refreshments and hang out with friends!

The evening is all about fun, whether you're looking to spend time with friends or keen on making new ones. Spaces are limited, so grab your tickets now and don't miss out.

Event details:

- **Date:** Fridays 24 January, 28 February and 28 March 2025
- **Time:** 7 to 9pm
- **Location:** ETNA Community Centre, 13 Rosslyn Road, TW1 2AR
- **Price:** £5 per person

[Book tickets](#)



The Death of the Richmond Progressive Alliance?

By James Knight

The Liberal Democrat's 2024 internal election review, spearheaded by former leader Tim Farron MP, has delivered a sobering assessment of the party's left-wing electoral pacts. The report recommends discontinuing the so-called "progressive alliance," where candidates from Labour, the Greens, or the Liberal Democrats stand down in favour of each other. While this strategy arguably boosted the party's MP count from 15 to 65, their highest number since 1923 the analysis points out their national vote share has barely budged, and their prospects for growth are low as they only came second in a small handful of seats.

The internal review was blunt, criticising formal electoral pacts as "undemocratic, unnecessary, and often counterproductive. Speaking to *The Guardian*, Farron described such deals as "an insult to the electorate," suggesting that voters, far from being enthused by backroom arrangements, can make tactical decisions without being strong-armed into them.

Liberal Reform, a right-wing faction advocating a return to classical liberalism, warmly embraced this recommendation. Taking to X (formerly Twitter), the group tweeted that it was good to see the so-called progressive alliance "has died." They added, "Liberal Reform have campaigned against this since its inception, and we're glad that the party has recognised that the public deserves better than political stitch-ups."

This public rift dates back to 2018, when Liberal Democrat conference delegates voted to remove the term "progressive alliance" from the party's strategy. Critics had argued, presciently, that the policy would tether the party to ideologies that fundamentally diverged from its economically liberal principles.

Indeed, the report highlights that 2024's electoral gains stemmed more from organic tactical voting than orchestrated pacts. Yet the review's broader findings reveal another challenge: the party's identity crisis. Current leader Sir Ed Davey's profile remains woefully low, with the public reportedly struggling to identify him. As a result, the party had to resort to stunts like bungee jumps in a desperate bid to raise his profile, at the cost of his long-term credibility.

The Alliance in Richmond

The alliance strategy was born in the 2016 Richmond Park by-election in 2016, where the Greens stood aside to help Sarah Olney oust Zac Goldsmith. This manoeuvre was hailed as a progressive masterstroke at the time despite subsequent upheaval within the Green Party. Accusations surfaced that the Greens were offered incentives - claims denied by the leadership

The Greens' absence on the ballot paper was instrumental in Olney's victory, part of the deal was a joint-ticket arrangement in the Richmond borough council elections (including joint leaflets and stake boards) which saw four Green councillors elected in 2018. However, the uneasy marriage fractured in subsequent years, raising questions about whether such alliances delivered more than fleeting electoral convenience. Despite much wooing, the local Labour parties declined to join the arrangement. They received a constant stream of comments from Cllr Roberts because it denied the Liberal Democrats wish of having an anointed centre left candidate.

Cllr Roberts refused to honour the agreement at the 2021 Hampton Wick by-election, which gnawed away at the mutual respect between the alliance partners. Since 2022, there have been numerous fractious exchanges in the council chamber that suggest their relationship is on the rocks—especially as the Liberals' record on the environment is not a glowing one. Thus, the Green Party's reputation has been undermined.

While Richmond's political experiment is often cited as the progenitor of these alliances, its legacy is discord rather than cohesion. The report offers a stark conclusion: that the Liberal Democrats' long-term viability rests not on a compromise with rivals but on sharpening their own appeal—a daunting prospect for a party still struggling to define what it stands for other than being a conduit for protest.

You can read the full text of the Liberal Democrat General Election Review 2024 [HERE](#)

AGM 2025

Prince Blucher pub

26th January 2025

8pm-9.30pm



Friends of Kneller Gardens

This has been a great year for Kneller Gardens. Join the committee members to hear about our plans and proposals for the park.

We are looking for new committee members to work with the group and contribute to looking after this popular park.

Everyone welcome.

More information

www.facebook.com/Friendsofknellergardens/

Frances.bennett@talk21.com



Friends of Kneller Gardens

January Food and Drink News

January is a strange old month: the weather is miserable, and to make things worse, we're encouraged not to eat any meat or dairy for Veganuary... and give up alcohol! To cheer us up a little, here are some new food and drink products I've recently discovered.

Oat Milk is usually 'long life' and, in my opinion, not that great tasting, but one company - **Oato** - is producing fresh oat milk that even can be delivered by your milkman. Oato oat milk drink is creamy and fresh, produced to barista-grade standards for a good coffee - that doesn't split. Delivered in a traditional glass bottle that can be reused, it keeps environmental impact to a minimum. **Oato Fresh Barista Oat** is also now available at **Sainsbury's** in litres (£1.75) or pints (£1.10). Because it's made fresh, you can really taste the difference. The litre pack is also available at Waitrose. More information at www.oato.co.uk. At the moment it's mainly just the oat milk available, but I was lucky enough to taste the company's delicious oatshakes (strawberry, chocolate and Caffè Latte) and I very much hope they'll be widely available too, before long!



Porridge is the perfect breakfast at this time of year, and the newest flavour from The **Great British Porridge Co** is Apple & Cinnamon. It's very tasty, and perfect for a quick warming breakfast on a chilly winter morning. It's 100% natural, with no added sugar, vegan and gluten free, and can be whipped up in just one minute. With real apple pieces, the rest of the sweetness comes naturally from dates. Simply add hot water, or some of your favourite hot milk, stir and serve. Apple & Cinnamon joins the seven other flavours in The Great British Porridge Co range: Classic Chocolate, Red Berry & Pumpkin Seed, Strawberry & Peanut Butter, Caffè Latte, Blueberry & Banana, High Protein & Low Sugar and Oatrageously Original. All seven flavours are available in 385g fully recyclable pouches containing seven servings, RRP £3.20, from Amazon, and some flavours also from Ocado

If granola is more to your taste, check out **The Happy Pear**. They are twin brothers who are now making it even easier for people to follow a healthy and vitamin-packed plant-based diet with their granolas. There are three to choose from: **Dave's Cocoa Crunch** - a healthier take on traditional sugar-laden chocolate flavoured breakfast cereals with a mix of oats, sunflower seeds, coconut and cocoa powder. **Steve's Dreamy Granola** - the ultimate high fibre, low sugar version of granola with oats, seeds, nuts, coconut and raspberries. **Cool Jim's Granola** - a flavoursome mix of oats, seeds, sultanas, coconut, goji berries and cashews. £4.99 for 400g or eight packs for £35.99 All three granolas are loaded with fibre and all-natural ingredients, with no added sugar, and they're free from artificial preservatives or colours. Available via The Happy Pear website www.thehappypear.ie (be sure to click on the tab for **UK delivery**), and from Amazon. Apparently it will be coming to UK supermarkets and independent retailers very soon!



The Coconut Collab, makers of those creamy pots of coconut deliciousness, have launched two new desserts: **Choc & Caramel** is smooth chocolate, with Belgian dark chocolate and a swirl of silky caramel for this classic combination.

And the small [White Choc Pots](#) are smooth pots of white choc ganache, with creamy coconut to pack a punch, and at only 115 calories a pot! Both are plant-based, gluten-free, palm oil-free and suitable for vegans. The Coconut Collab ensures that 100% of the coconuts sourced to create its range are used within its supply chain, resulting in zero waste. Choc & Caramel (£1.50, 110g) from Tesco, Morrisons & Ocado and White Choc Pots (£2.95, 4 x 45g) from Tesco, Morrisons & Sainsbury's



I love Matcha - it's such an unusual flavour and very versatile. As well as drinking it in the conventional way as a green tea, I like to sprinkle it on desserts, porridge, and include it in baking. **Whittards of Chelsea** has just launched a selection of hot drinks to help meet wellness goals including its selection of ceremonial grade Matcha powders. Each tin contains 30 servings, so you can enjoy your favourite matcha drink at home, perfectly paired with any milk of your choice. They're the ideal pick-me-up, packed with health benefits, to get through these cold, dark months. You can also take your matcha moments to the next level with Whittards tools. Whether you're a matcha expert or just starting out, the right equipment makes a difference. A bamboo whisk creates the smoothest froth, and precision scoops give the correct measure. With the kits you can make everything from traditional matcha tea, to indulgent lattes and matcha-inspired treats. [Matcha](#) - RRP £22 [Vanilla Matcha](#) - RRP £20 [Coconut Matcha](#) - RRP £20 [The Must Have Matcha Collection](#) - RRP £32.20

We've recently become rather addicted to **Bonne Maman's** new Petits Muffins. Available in two flavours: **Petits Muffins Vanille**, with natural vanilla from Madagascar, or **Petit Muffins Chocolat** with 14% chocolate. Each tempting little cake is soft, fluffy and tasty. They are just perfect with a cup of tea or coffee. With 17 little muffins per bag, they're good value and just perfect for sharing. They contain no artificial colours or flavours, and the Petits Muffins are available in 235g bags at Tesco, Waitrose and Ocado at £2.50 rrp.



And last, but by no means least, even if you've been trying to do Dry January, the end is in sight, so here's the perfect red wine to indulge in to celebrate your success at the end of next week. This is the **Paul Mas Reserve Merlot** from Jean-Claude Mas's vineyards in the Occitanie region in the South of France. Conas vineyard is located on the hillsides of the Hérault Valley, around the Château Paul Mas, the cradle of Domaines Paul Mas. The wine is vinified with traditional methods, long maceration and then aged in oak barrels, resulting in a quintessence of red and black berry flavours evolving towards plum and cocoa notes. It's a stonkingly good and refined wine, velvety and rich. What's more, **Tesco** has it on offer for clubcard holders at just £8 a bottle, until **14 February**, instead of the usual £10.

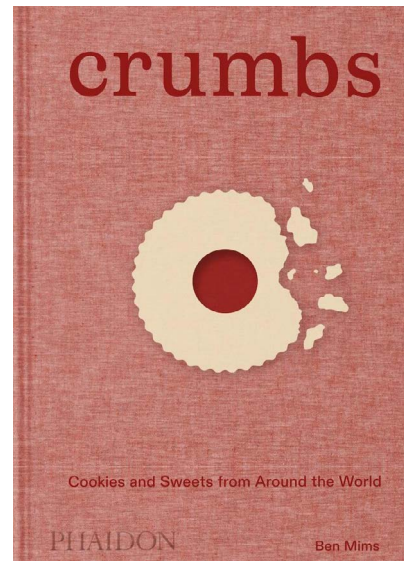
Crumbs: A Veritable Baking Bible!

If you're already a dab hand at baking cookies, you might think you don't need this book, but trust me, 'you ain't seen nothin' yet!' **Crumbs**, published by **Phaidon**, is a sprawling exploration of cookies, biscuits, and sweet treats from nearly 100 countries. This vast collection gathers 300 authentic cookie recipes, including gingerbreads, thumbprint cookies, bars, wafers, shortbreads, tea cakes, cookie sandwiches, and everything in between.

Curated, researched, and tested by food writer Ben Mims, **Crumbs** provides a detailed look into the cultural, historical, and culinary status of the cookie. It unfolds geographically, with chapters dedicated to a geographical region or set of countries sharing a similar culinary heritage, celebrating the unique characteristics of each region's specialities and ingredients. From Austrian Railroad Man Cookies to Venezuelan Brown Sugar Cookies, it's an astounding array of recipes, all accompanied by photographs.

Whatever your preference – from a comforting oatmeal-raisin cookie to a decadent French macaron – *Crumbs* will become a go-to cookbook and an invaluable resource for great-tasting baked treats for any occasion. At £35 for a hardback, this isn't perhaps a cheap cookbook, but for anyone you might know who's a caterer, or a dedicated amateur interested in world biscuity bakes, or studying cookery, it will be a seriously important addition to their culinary collection.

Here are a couple of recipes to demonstrate this wonderful book's breadth and scope.



Chocolate Slice Cookies Chokladsnittar SWEDEN

Prep time: 40 minutes, plus chilling time **Cooking time:** 20 minutes **Makes:** About 36 cookies

“Around the same time that chocolate made a big splash in the United States in the 1940s with Chocolate Chip Cookies, so too did many Swedes get their first taste of a chocolate version of their beloved “slice” cookies, or snittar. These “chocolate slices” were published under the name Märta’s Chocolate Slices, for the name of the author of the classic book Sju Sorters Kakor. Essentially, they have an eye-catching appearance thanks to the deep dark cocoa used in the dough contrasted with bright matte white pearl sugar. The texture of these slices is also very brownie-like and likely played a part in influencing those treats in the United States.”

- 2 cups (280 g) all-purpose (plain) flour
- 1/3 cup (30 g) Dutch-process cocoa powder
- 1 teaspoon baking powder
- 3/4 teaspoon fine sea salt
- 1 1/4 cups (250 g) white (UK caster) sugar
- 2 sticks (8 oz/225 g) unsalted butter, softened
- 1 egg
- 1 tablespoon Vanilla Sugar or 2 teaspoons pure vanilla extract
- Egg wash: 1 egg yolk beaten with 1 tablespoon water
- Pearl sugar, for decorating



1. Position racks in the top and bottom thirds of the oven and preheat the oven to 350°F (180°C/Gas Mark 4). Line two large baking sheets with parchment paper. In a medium bowl, whisk together the flour, cocoa powder, baking powder, and salt.
2. In a large bowl, with a hand mixer, beat the caster sugar and butter on medium speed until pale

and fluffy, 2–3 minutes. Add the egg and beat until smooth. Beat in the vanilla sugar. Add the dry ingredients and mix on low speed until a dough forms and there are no dry patches of flour remaining. Cover the bowl with plastic wrap (cling film) and refrigerate for at least 2 hours or up to 1 day.

- 3.
4. Divide the dough into 4 equal portions and shape each piece into a log 12 inches (30 cm) long. Place 2 logs lengthwise on each baking sheet, spaced 4 inches (10 cm) apart, and flatten slightly with your hand.
5. Brush the logs lightly with some egg wash and sprinkle liberally with pearl sugar. Bake until the cookie logs are flattened and dry to the touch on top, 16–18 minutes, switching racks and rotating the baking sheets front to back halfway through. Transfer the baking sheets to wire racks and let the cookies rest for 10 minutes. While still warm, slide the cookie logs on the parchment paper onto a cutting board and cut at a slight diagonal every 1 1/4 inches (3 cm) to make slices. Transfer the slices directly to the rack to cool completely.

Almond and Sugar Cookie Bars Jan Hagel Koekjes NETHERLANDS

“In Dutch, jan hagel refers to an unruly mob. Some people have interpreted that as a take on the cookie’s jumbled garnishes of sliced (flaked) almonds and crushed pearl sugar. Others have taken it to mean a term for the type of people who’d enjoy such a simple cookie since the term has also been documented as a slang term for sailors, common people, and others on the fringes of society.”

Prep time: 20 minutes, plus 10 minutes resting time **Cooking time:** 25 minutes **Makes:** About 24 cookies

- 2 cups (280 g) all-purpose (plain) flour
- 1 teaspoon baking powder
- 1 teaspoon ground cinnamon
- 3/4 teaspoon fine sea salt
- 1 1/2 sticks (6 oz/170 g) unsalted butter, softened
- 3/4 cup (150 g) white US granulated (UK caster) sugar
- 1 egg, separated
- 1/3 cup (40 g) sliced (flaked) almonds
- 1/4 cup (50 g) pearl sugar or roughly crushed sugar cubes

1. Preheat the oven to 350°F (180°C/Gas Mark 4). Line a 9 x 13-inch (23 x 33 cm) light metal baking pan with parchment paper, leaving the excess hanging over the edges. In a bowl, whisk together the flour, baking powder, cinnamon, and salt. In a large bowl, with a hand mixer, beat the butter and white US granulated (UK caster) sugar on medium speed until light and fluffy, 2–3 minutes. Add the egg yolk and beat until smooth. Add the dry ingredients and stir until there are no dry patches of flour remaining.
2. Press the dough into the bottom of the prepared baking pan to make an even layer. Beat the egg white in a small bowl until frothy, then lightly brush the dough with only enough of the beaten egg white to moisten it fully (you should not use all the egg white). Sprinkle the almonds and pearl sugar evenly over the dough.
3. Bake until the cookie slab is golden brown all over and dry to the touch in the centre, 20–25 minutes, rotating the baking pan front to back halfway through. Transfer the baking pan to a wire rack and let the cookie slab rest for 10 minutes. Using the overhanging parchment paper, slide the cookie slab out of the pan and onto a cutting board. Cut the cookie slab into 3 x 1 1/2 inch (7.5 x 4 cm) rectangles. Transfer the rectangles to a wire rack to cool completely.



GIBRALTAR
sunborn
YACHT HOTEL RESORT



VALENTINE'S DAY PACKAGE

INCLUDING ROMANTIC WELCOME AMENITIES

ACCOMMODATION AND BREAKFAST BUFFET FOR 1 NIGHT, 2 GUESTS

**FREE UPGRADE SUPERYACHT SUPERIOR ROOM
4 COURSE VALENTINE'S MENU**

£50 SPA VOUCHER

PRICE £349 PER PACKAGE FOR 2 GUESTS

Available on 14th and 15th of February 2025

RESERVATIONS: 00 350 200 16000 | RES@SUNBORNGIBALTAR.COM

WWW.SUNBORNGIBALTAR.COM

Old but Young?

By Deep Patel

~Life through the eyes of a Twickenham shopkeeper~



As a shopkeeper, I get to interact with such a wide variety of people from every single age group and background, perhaps more so than people from other occupations would get to do so...and I genuinely believe it's what makes me more of a rounded person (and I don't mean rounded as in tubby around the belly or anything – those of you who have seen me would know it's actually quite the opposite!) but in general, I am lucky in my job to meet people from such varied backgrounds as I always feel that I learn something from them in some. I love talking to all of my customers (again, those that know me will know this too) however, one of my favourite age groups of customers to talk to is those above the age of seventy...eighty is even better...you may be thinking, what does a young, handsome shopkeeper like Deep want to spend time chatting to the over eighties for? Well in all honesty, they fascinate me...they are so inspiring and have so much wisdom to share, I prefer talking to them more than I like talking to my own peer group to be honest.

The other thing I find incredible is how damn young the older folk of Twickenham actually look...I mean am I the only one noticing this? Is it something in the water keeping everyone young? Or is it the fresh air of Twickenham Green breathing youth into the lungs of the older Twickenham dwellers? Perhaps the secret is having a nice, good value, friendly newsagent shop nearby called Meet & Deep Newsagents? Perhaps a combination of the three afore mentioned? Whatever it was, I was noticing more and more, the “older people” (no offence intended) of Twickenham who were coming into my shop were actually looking younger and younger...but why?

I decided to carry on with the tasks of my day but couldn't stop thinking about the youthful-looking elderly that I was serving...how did they look so young? What was their “secret”? What were they doing that I wasn't? The curiosity got too much for me and I began asking some of these customers as they approached the counter in my shop to pay for their purchases...I started by asking their age (I only asked in a jokey way in case some of them thought I was being rude). Then those that were over eighty years of age, I continued to further question...I asked what time they went to bed at night and how many hours they slept for. I asked what they usually eat for breakfast, lunch and dinner and also how they would “sum up” their attitude towards life in general...

The outcome was not what I expected. I thought the responses would include the regular attendance of gyms, eating a daily handful of vitamin health supplements and drinking a protein or healthy juice mix each day. I was wrong. Obviously, genetics play a role here, but even with that, the answers I got from my customers still showed how certain habits and behaviours were common in all older people who looked younger... Of all the “younger looking older people” that I questioned, the same themes were prominent...ALL of them had a few things in common that they all did...as your local, friendly Twickenham shopkeeper, it's my duty to share these with you here. It seemed all you had to do to look younger as you get older were rather...simple:

A SHOPKEEPERS SEVEN STEPS TO STAY LOOKING YOUNGER WHEN OLDER:

- 1) Wake up early every day and stay hungry for a few hours before having breakfast
- 2) Eat the SAME simple breakfast with a hot drink (no sugar) around the same time every day
- 3) Eat a lunch made primarily of lots of different fresh vegetables and fruits every afternoon, cooked from fresh, honest ingredients only (including lots of soups)
- 4) Eat a simple dinner each night made with simple ingredients (pasta, sandwiches, soups etc.)
- 5) Choose puddings such as natural fruit yoghurts etc.
- 6) Keep portion sizes small for each meal with very little meat.
- 7) Sleep for 7 hours each night.

So there we are, want to look 50 when you're 80? Follow my steps above and you may just succeed...well. It seems to work for all those customers I questioned this past week in my shop...so why would it not work for you?

If any of you happen to be passing by Meet & Deep Newsagents on Hampton Road, TW2 5QB, pop your head in and say hi...

Remember...

“You are what you eat...”

MY CREATURE-KINDNESS TIP OF THE WEEK...

Purchase high-frequency plug-in pest stopping plugs into each room, buy ones with good reviews online and follow the instructions, we stock them at Meet & Deep Newsagents here too, they work really well to keep ALL “pests” away, without harming any...good karma always!

For ANY specific tip to stop any “pest” or insect KINDLY (for good karma/blessings), email me: thedeepatel@gmail.com or join my Facebook page: “INSECT LOVERS UNITE”



13 Days

by Angela Gibbins

Teddington Theatre Club at Hampton Hill Theatre until 25th January

Towards the end of October 1989, I witnessed the dying days of communism in Hungary. Budapest fluttered with flags which had large holes in the middle, where the hammer and sickle had been cut from the national flag. People climbed lampposts in Karl Marx Platz to paint over the street signs, now as Imre Nagy Square.

Imre Nagy had become the folk hero of the Hungarian Revolution, which began thirty-three years earlier, on 23rd October 1956. By 4th November, it had been crushed by Soviet tanks. These thirteen days inspired local writer Angela Gibbins' dense drama.



This premiere production of *13 Days* is in the capable hands of director Clare Cooper, who has carved out a niche market in analytical plays about the period. The set has economic essence, a few flags and a versatile bench, doubling as a funereal bier or statue's plinth. A video backdrop shows authentic footage of the violence that interjects everyday life, by the Soviet military behemoth, by the vicious treachery of the Hungarian secret police, and by ordinary people driven to revenge.



The three historically important Hungarian politicians, Imre Nagy, János Kádár and Ernő Gerő skate on politically thin ice. At stake is their country, their future ... and their lives. Each has his own agenda to fulfil, whilst balancing the interests of vested groups, yet managing his own political and personal destiny.

Only one, Imre Nagy, emerges as a man of principle, reinstated as Prime Minister because to appease a fractious public. Chris Dearle's portrayal of Nagy is of a gentle man, trying to come to terms with possibility of reconciling the demand of the rebels, the tight hold of the internal Hungarian communist party, and the hovering threat from Khrushchev's Soviet Union. Dearle excels in showing the character's resolution versus hesitation, ideology versus pragmatism, and caution versus action, juggling all these possibilities.

Ernő Gerő is a Stalinist hardliner. Under the veneer of being part of Nagy's government, it is he who, often literally, is calling the shots. Robin Legard's Gerő is a refractory hard-liner to be avoided. The third, János Kádár, is a slippery two-faced character. David Robbins portrays a

man superficially urbane, yet capable of the most heinous acts, all done with a smile.

These purveyors of Realpolitik have, as their nemesis, General Mikoyan, an unflinching hard-man, with the Soviet army at his beck and call. Marcus Ezekiel is outstanding in this role as he portrays a man of steel, always with the thinly-veiled threat of military intervention, yet with a man with hidden dimensions.

Prominent amongst the civil servants in Nagy's office is his son-in-law and factotum, Ferenc János, whom Alex Pearce plays full of nervous energy, and Julia, widow of executed politician Laszlo Rajk's. Laura Hannawin gives Julia Rajk a fervency born of grief, in a touching depiction of loss.



Every actor is totally engaged with the characters they portray, and this production evokes the human cost of conflict. Intimate interactions of two friends, Luca and Ilona, played with poignancy by Luciano Dodero and Enid Gayle, as they plan a supper of a dead pigeon, depict the minutiae of survival. Interludes of sub-balletic movement in scenes of funerals, rioting, or massacre, and in quotidian interactions of hope or despair, are accompanied by a mesmerising ethereal soundtrack.

As for the rest of the world, the inimitable Roger Smith has a pointed cameo as the Britain's Representative to the UN. The West seems almost relieved that the Suez crisis has diverted attention from an awkward confrontation with the Soviets.

There are messages that resonate into the twenty-first century. Mikoyan's labels the Soviet incursions into Hungary as "special operations", echoed today by Putin, while debate is shut down by calling critics "fascists".

We ignore history at our peril, and *13 Days* makes an almost forgotten piece of history come alive with power and pertinency.

Read Mark Aspen's review at www.markaspen.com/2025/01/22/13-days

Photography by Steve Sitton

The Anniversary

by Bill MacIlwraith

The Questors at the Studio, Ealing until 25th January

First produced in the mid 1960's, *The Anniversary* is a no-holds barred examination of a matriarchal household slowly imploding.

Mobolaji Babalola's leather sofas, bakelite telephone and drinks cabinet, with a suitably irritating tune that plays every time it is opened, is a perfect backdrop to this wealthy working class family drama. Jenny Richardson's costumes: Tom's lairy suit, Karen's headband and Shirley's tights put them firmly in the 1960's.

It's the wedding anniversary of Mum and now deceased Dad, who looks down from his portrait above the piano. The family owns a building company which, under Mum's stewardship, has become increasingly demanding on her sons. Each year her three sons join her to celebrate the anniversary, and she takes the opportunity to reconfirm



her manipulative power over their futures. Despinna Sellar's role as Mum, one of the nastiest least sympathetic characters known, is pivotal to the plot. Even her soft caring it is only manipulation into another power-play situation. She is happy, as suits her purpose, to pitch one son against the other, shifting her favouritism to each in turn.

There are humorous asides about cowboy builders, as the emotionally intense confrontations are frequently interrupted by complaints from customers. Oh, and Henry's transvestitism, played sympathetically by Craig Nightingale, makes a humorous antidote to his hard-edged mother.

Skilful performances by Sherralyn and Caitlyn Vary as Karen and Shirley demonstrate how the two married sons, anxious to get away from their abusive mother, have found determined wives, able to give as good as they got. Ed Clements' Tom is convincing as both the wannabe rebel and the vulnerable child desperate to win this endless maternal battle. Mike Hadjipateras conveys put-upon Terry's frustration at his inability to cope with the constant emotional abuse doled out by his mother.

The play, in its time, aimed to shock, and the original direction was probably more mannered and staccato than Russell Fleet's flowing pace. Working class families in a traditionally middle class family drama no longer shocks, neither does Henry's sad washing-line lingerie theft, but with its witty dialogue and intergenerational drama, *The Anniversary* still retains its edge.

Read Polly Davies' review at www.markaspen.com/2025/01/18/anniversary-q

Photography by Jane Arnold-Forster

Alan Ayckbourn's **TABLE MANNERS** at the Mary Wallace Theatre

One of Ayckbourn's best loved comedies, *Table Manners*, is currently playing to sell-out houses at the Mary Wallace Theatre on Twickenham's riverside.



Photo credit Charlotte Horobin

Our next production, playing from March 15th-22nd is another sparkling comedy - Terrence Rattigan's ***While The Sun Shines***, a 1940's cocktail of romance, assignations, and mistaken identities.

Book early at www.richmondshakespeare.org.uk to avoid disappointment.



British Beekeepers' Association response to Government announcement on neonicotinoid emergency approval

The British Beekeepers' Association (BBKA), which represents around 30,000 hobbyist beekeepers across England and Wales, has welcomed the news this week that the Government has denied emergency authorisation of the use of the neonicotinoid pesticide, Cruiser SB.

On 23rd January 2025, the Department for Environment, Food and Rural Affairs (Defra) announced that an emergency application for the use of Cruiser SB on sugar beet in England will not be granted, adding that 'there is clear and abundant evidence that this neonicotinoid is extremely toxic to pollinators, such as bees.'



This is the first time in five years that an emergency approval for the use of the pesticide has not been passed.

Cruiser SB is a coating for sugar beet seeds that contains the active substance Thiamethoxam, which can cause cognitive problems in honey bees and other pollinators. Farmland that is treated with the pesticide cannot have any flowering crops for three years, leading to diminished forage for pollinators and eventual starvation.

The BBKA's longstanding position on the use of neonicotinoids pesticides is informed by current scientific evidence regarding their toxic effects on the pollinators on and around the 100,000 hectares of UK farmland which are used for growing sugar beet in the UK.

The charity has long been concerned that the former UK Government's decision to grant emergency approvals of Cruiser SB did not follow growing scientific evidence or the advice of their own experts.

Announcing the decision earlier this week, Environment Minister Emma Hardy pledged the Government's commitment to protecting bees from toxic neonicotinoid pesticides, while working to find new ways to protect crops and support farmers.

BBKA Chair, Diane Drinkwater reacted to the Government's announcement saying:

"The BBKA welcomes this new decision. This is the right decision, now is the time to follow the Government's expert advice and move to more sustainable alternative methods which will bring benefits to the environment, pollinators, farmers and food security."



St Mary's University

Chelsea Foundation Coaching & Development Students Support Reece James Cup

Students from the Chelsea FC Foundation Coaching & Development degree at St Mary's University, Twickenham (SMU) had an incredible experience supporting the Reece James Cup at Chelsea FC's Cobham Training Ground.

insightful to see how Academy staff work, which has inspired me to pursue a career in Academy football even more. It was fantastic to get to know the players, and the coaches were inspiring to observe."



Fellow student Ellie Luscombe added, "Working closely with players and staff from other countries was great, and opened my eyes to different football cultures. I

gained a lot of knowledge and confidence from this experience."

Students from the Chelsea FC Foundation Coaching & Development degree at St Mary's University, Twickenham (SMU) had an incredible experience supporting the Reece James Cup at Chelsea FC's Cobham Training Ground.

Alex Cattini, Course Lead at St Mary's University, said "It was amazing to see our students supporting this fantastic event. Our students represented the degree impeccably, and received superb feedback from staff and players alike. We are very grateful to the Academy at Chelsea for providing these opportunities."

The inaugural under-15s tournament, named in honour of current Men's Captain Reece James, saw Chelsea, Rangers, Feyenoord, and Strasbourg compete across a weekend of exciting football.

[Chelsea FC Foundation Coaching & Development degree](#) allows students to study a wide variety of modules that gives a unique insight into the world of football, as well as valuable work placements across a variety of programmes.

The students, who are all currently studying at SMU, played a pivotal role in the smooth running of the tournament as team liaisons.



St Mary's
University
Twickenham
London

Student Freddie Frost said, "It was very

47,000 young people to benefit from Big Bang at School Blueprint

EngineeringUK is partnering with The Royal Air Force Charitable Trust (RAFCT) to expand the reach of its [Big Bang at School Blueprint](#) programme, where secondary schools can host their own exciting science and engineering days.

With a skills and labour shortage in the engineering and technology sector, and [EngineeringUK and Royal Society research](#) showing some girls are switching off from science, the partnership with RAFCT aims to support up to 47,000 young people to enjoy their own Big Bang at School day with amazing science and engineering activities, workshops and projects and spark a passion and curiosity for all things STEM.



The funding will enable [Big Bang at School Blueprint](#), which aims to bring the same fun, excitement and interactive learning experience as [The Big Bang Fair](#), held each year at the NEC, to the classroom to benefit 11 to 14 year-olds and bring to life science, engineering and technology careers through shows, workshops and activities.

RAFCT aims to inspire young people to consider careers in Science Technology Engineering and Mathematics (STEM) and is powered by the proceeds of the Royal International Air Tattoo.

Dr Kevin P Stenson, Director of RAFCT said, *“The RAF Charitable Trust, powered by RIAT, is delighted to support EngineeringUK’s Big Bang School at School Blueprint programme. This new partnership, part of our aim to be able to support an annual National STEM programmes for 500,000 young people aged 5 – 25 years, represents a huge leap forward for us by enabling nearly 50,000 11 to 14-year-olds to be inspired to fulfil their potential in air, space and technology. This secondary school programme builds upon existing programmes we enable with primary schools.”*

Bursaries for the Big Bang at School Blueprint are available for priority schools to help teachers host their own STEM project and workshops.

EngineeringUK Chief Executive, Dr Hilary Leever said, *“It’s fantastic to be partnering with the RAF Charitable Trust to help spread the reach of the Big Bang at School Blueprint. More young people from all backgrounds across the UK need to know about the exciting and impactful jobs to be had in science, technology and engineering. We greatly appreciate the support of the RAF Charitable Trust to help us make that happen through the Big Bang at School Blueprint - and we’ll make sure children have some fun along the way!”*



Join in the RSPB Big Garden Birdwatch with British Garden Centres

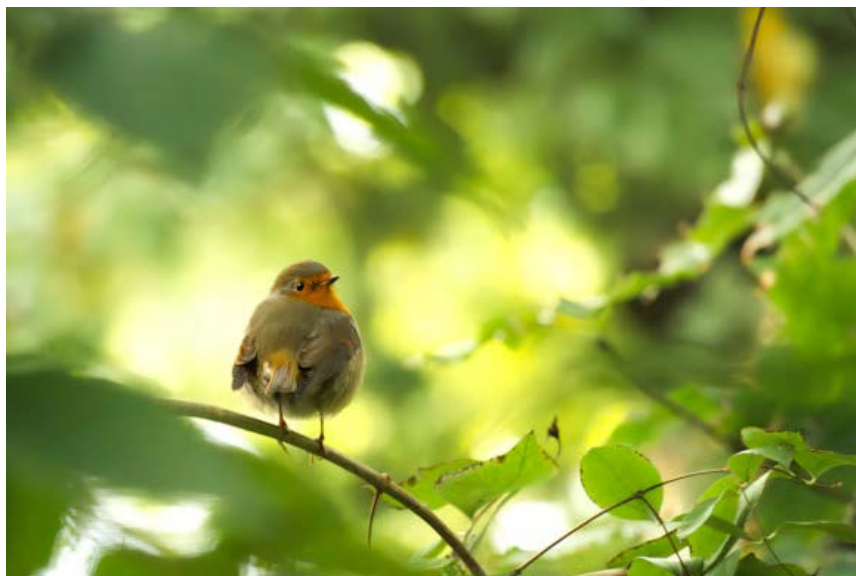
The RSPB's Big Garden Birdwatch is just around the corner (24th-26th January 2025)! Join the nation in this fantastic family activity by spending an hour observing the feathered friends in your garden. Not only is it a delightful way to connect with nature, but your data helps scientists understand and protect bird populations.

Your local British garden Centres will have all you need to make the most of your birdwatching experience, from bird feeders and seeds and the team have put together this guide to help you spot more avian visitors!

How to attract more birds to your garden

Want to increase your chances of spotting a variety of birds? British Garden Centres has everything you need to create a bird-friendly haven.

- **Bird-friendly plants:** Our stores are brimming with bird-attracting plants, and we recommend planting berries, seeds, and nectar-rich flowers which are a feast for birds all year round. Crab apples, berry bushes, and fruit trees provide food and shelter from predators and the unpredictable UK weather. Plants such as holly, hawthorn, and rowan offer delicious berries or attract insect snacks, meaning birds will come flocking to the garden for a tasty treat.



- **Feeders for your outdoor space:**

At this time of year, when the weather is cold and food is scarcer, birds' diets will need supplementing, and we stock a wide range of feeders for seeds, suet, and nectar. Whatever the size of your garden, invest in seed feeders, perfect for small birds like tits and sparrows, and come in various styles from ones you can hang from a balcony or tree to stakes that have the full works for your lawn. We also have mealworms and peanut feeders cater to multiple birds, while fat ball feeders provide essential energy, especially during winter.

- **Perfect homes:** Provide safe havens with our selection of birdhouses and nest boxes. It's important to choose the right size hole for different species: small for tits, larger for starlings. Open-fronted boxes are ideal for robins and song thrushes. Garden birds need sheltered places to roost to conserve energy and stay warm and they can also be used for early nesting by some bird species like blue tits and great tits.
- **Bird baths and bowls:** Birds need water year-round and the UK winter sometimes sees natural water sources like ponds and streams freezing, making it difficult for birds to find fresh water for drinking and bathing. Choose from shallow dishes, bowls, or elevated birdbaths to help them remove dirt and aid digestion of food.

Amy Stubbs, Project & Development Manager at British Garden Centres said: *Our knowledgeable and friendly staff can offer expert advice on bird feeding, including choosing the right feeders and keeping them clean, as well as advice on bird-friendly gardening like avoiding harmful pesticides, providing clean water, and creating a diverse garden that birds will want to visit again and again."*

Donate your pre-loved items to FARA

When you donate to FARA'S charity shops, you are helping to fund our programmes which **transform the lives of disadvantaged children and young people – and you're also doing your bit towards a sustainable future for our planet.**

Our stores rely on donations from supporters like you and we urgently need to replenish our stocks of good quality clothing, shoes and accessories (for adults and children), homewares, baby kit, kids' toys and even books and bric-a-brac.

So, if you're having a clear-out, editing your wardrobe, moving house or looking for a good home for clothes your children have grown out of, please get in touch – you can drop off your items with the friendly local team at any one of our **40 London stores**. You can also donate items by post, for more information please click [here](#).

Please kindly ensure that your items are:

- **Clean** - nothing soiled, rusty
- **High quality** - good enough to sell
- **Complete** - full sets, working order only



Please don't forget to Gift Aid your donations. **Gift Aid adds an extra 25% to the proceeds of your sale** (at no extra cost to you), so it's a really easy way to make your donation go even further towards supporting vulnerable children.

If you are unsure of whether your items are suitable for donation, please feel free to contact your local store directly or visit our donation guide page [here](#).



FIXTURES

2025

— GMT —

ROUND 1	FRA 	FRI 31 JAN 20:15	 WAL	ROUND 1
	SCO 	SAT 1 FEB 14:15	 ITA	
	IRE 	SAT 1 FEB 16:45	 ENG	
ROUND 2	ITA 	SAT 8 FEB 14:15	 WAL	ROUND 2
	ENG 	SAT 8 FEB 16:45	 FRA	
	SCO 	SUN 9 FEB 15:00	 IRE	
ROUND 3	WAL 	SAT 22 FEB 14:15	 IRE	ROUND 3
	ENG 	SAT 22 FEB 16:45	 SCO	
	ITA 	SUN 23 FEB 15:00	 FRA	
ROUND 4	IRE 	SAT 8 MAR 14:15	 FRA	ROUND 4
	SCO 	SAT 8 MAR 16:45	 WAL	
	ENG 	SUN 9 MAR 15:00	 ITA	
ROUND 5	ITA 	SAT 15 MAR 14:15	 IRE	ROUND 5
	WAL 	SAT 15 MAR 16:45	 ENG	
	FRA 	SAT 15 MAR 20:00	 SCO	

IHG[®]

HOTELS & RESORTS

England Men Return To York To Host Open Training Session

The England Men's rugby squad will head back to York to host an open training session on Friday 28th February.

The session, which falls in the second fallow week of the 2025 Guinness Six Nations, will be held at the LNER Community Stadium, home of York City Football Club and York Rugby League Football Club, with tickets available for free (£1 booking fee per ticket applies).

Steve Borthwick's men made the trip north during last year's addition of the Six Nations and will do the same as they prepare for the Round 4 clash against Italy at Allianz Stadium.

The LNER Community Stadium is one of the host venues for the upcoming 2025 Rugby World Cup and will host six matches during the competition.



"We really enjoyed our time in York last year, and it made sense to go back again to continue preparations for the last two rounds of the Six Nations," said Borthwick,

"The welcome we received at the LNER Community Stadium was brilliant, and we're excited to do it all over again. The buzz around York to host matches for the 2025 World Cup is clear to see and I'm sure it will be a superb host city."

"The players can't wait to get back to York and see everyone at the open training session," said Maro Itoje, England Men's captain.

"Last time, even though the weather was unpredictable, the atmosphere was incredible. It will be an important week of preparation, but it will be great to share what we do in our training sessions with the public."

For information on how to book tickets, please [click here](#).



Match Preview: Crystal Palace v Brentford

Analysis, team news, match officials and more. Here's everything you need to know ahead of Brentford's Premier League away game against Crystal Palace on Sunday at Selhurst Park (2pm kick-off GMT)

Written by Brentford Football Club

Brentford travel across London to face Crystal Palace in the Premier League at Selhurst Park on Sunday (2pm kick-off GMT).

Thomas Frank's side fell to a 2-0 defeat against league leaders Liverpool last time out but were victorious in their last away game, securing a 5-0 win at Southampton.

Sunday's match will be televised on Sky Sports.

Analysis, team news, match officials and more. Here's everything you need to know ahead of the Bees' latest test.

Pre-match analysis

Richard Cole, Playmaker Stats: Tight game expected at Selhurst Park

Brentford face a tough test when they make the trip to Selhurst Park to take on a Crystal Palace team who have made themselves very difficult to beat.

Oliver Glasner's Palace have improved as the season has progressed and are currently on a run of four wins out of their last five games in all competitions – a spell that includes a solid draw against Chelsea at Stamford Bridge.

Indeed, since the November international break, only one team has managed to get the better of the Eagles. In their last 13 games, Palace have lost just twice - to Arsenal in both the Premier League and the Carabao Cup - while also winning six and drawing five.

But Palace have had their struggles in front of their fans this year. Only two teams have scored fewer Premier League goals at home than Palace (10) - Ipswich on eight and Southampton on seven.

In comparison, Brentford top the home goals chart with 29 – almost three times as many as Sunday's opponents!

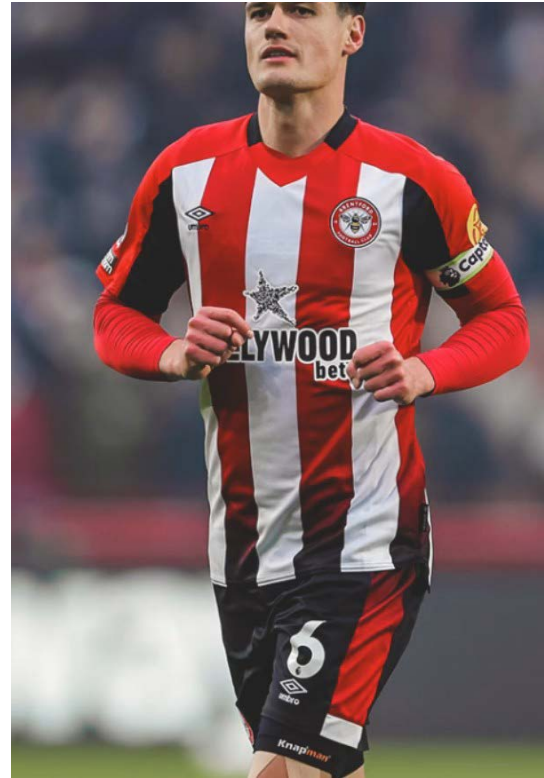
While Palace are struggling for goals at home, Thomas Frank's attacking line can expect to face a stern defence.

The Eagles have made more tackles than any other team in the Premier League (475) with Daniel Muñoz the division's top tackler (77) while Tyrick Mitchell (62) and Will Hughes (49) also feature in the top 20.

In Maxence Lacroix, Palace have the defender with the joint-second highest number of interceptions in the league (36) while the Frenchman also ranks ninth for clearances (99).

Beyond the tackling and intercepting, the Eagles have been particularly adept at blocking. In total, Palace have made 536 blocks (sixth in the league). At the same time, the in-form Mitchell is responsible for getting in the way of 10 crosses (fourth in the league) and second for passes blocked (36, behind only Liverpool's Alexis Mac Allister).

Brentford may even find a challenge aerially. The Bees typically top the 'aerials won' stat but Palace aren't too far behind with 314 aerials won compared to the west Londoners' 366.



But that's not to say that Bryan Mbeumo, Yoane Wissa and co won't find opportunities. Palace goalkeeper Dean Henderson has had to make 11 saves from inside the six-yard box – more than any other goalkeeper in the division.

While goals aren't Palace's speciality this campaign, they are a threat. In fact, no other team has had as many attempts from set-piece situations as Palace (93 shots).

Only a lack of efficacy stops them from being the most dangerous team from dead ball situations, with the Eagles' nine goals from set-pieces (excluding penalties) second only to Arsenal.

The Bees will also have to deal with the threat of Jean-Philippe Mateta, who has eight goals in the Premier League so far this season – more than a quarter of his team's total tally. The forward has also made a brilliant start to the New Year having scored all but one of Palace's league goals in 2025.

The 27-year-old netted the equaliser against Chelsea at the start of the month before the opener against Leicester City and a brace in the 2-0 away win against West Ham last Saturday.

We can expect a tight game on Sunday as 11th-placed Brentford take on 12th-placed Palace. It's no surprise that the first five Premier League games between these two all ended in draws before the sides won a game each.

Scout report

Dan Long, Sky Sports: Palace can secure top-half finish after slow start to the season



The 2023/24 season was one of the more memorable Premier League campaigns for Crystal Palace, as they scored more goals than ever before (57), posted their joint-best points total (49) and finished in the top half for only the second time in 15 seasons in the competition.

The way Oliver Glasner came in as Roy Hodgson's successor and led the Eagles to seven wins from his first 13 games - including six in the final seven - certainly whet the appetite.

Fans will not have wanted the season to end - not least because it was the last glimpse they would see of star man Michael Olise before his anticipated move to Bayern Munich.

The funds from his sale and that of Joachim Andersen were reinvested, but the momentum Glasner's side had generated at the tail end of last term all but evaporated at the start of this. They opened the season with a 2-1 defeat to Brentford at the Gtech and picked up just three points from their opening eight, which left them in the relegation zone by the end of October.

Granted, they had played Chelsea, Manchester United, Liverpool and Nottingham Forest during that time, but the lack of goals was of concern to Glasner. Following the Forest defeat, he said: *"At the moment we don't score goals and we have to be honest. No goal today, no goal versus Liverpool, no goal versus Manchester United, and if you play like this it is difficult to win."*

They did win the next game, 1-0 at home against Tottenham, but then it was five games until they picked up their second of the season, 1-0 away at Ipswich on 3 December. Thankfully for Palace, it has turned out to be

a false start; a blip - perhaps kindly placed, in hindsight - at the start of the season. And things have only got better since then.

Twice they took the lead at home to Manchester City, before Rico Lewis secured a 2-2 draw for Pep Guardiola's side and, in the seven games since, they have won four, drawn two and lost just once, when Arsenal ran riot with a 5-1 win at Selhurst Park four days before Christmas.

Their recent wins have come against rivals Brighton, Southampton, Leicester and West Ham, with draws against in-form Bournemouth and Chelsea. While those victories have not come against top six sides, they have come against teams battling at the wrong end of the table or those around them. To be in with a shout of another top-half finish, those types of wins are essential.

Glasner and the fans will want more, though - and there is certainly room to improve. Palace have won the fewest games of any of the current top 15 teams (six) and, of the 17 teams outside the relegation zone, only Everton (18) have scored fewer than their 25 so far.

But with Manchester United, Everton and Fulham next up after Brentford's visit, in their current vein of form and with experience of finishing with a flourish last season, Palace really could properly kick their top-half push into gear over the coming weeks.

In the dugout

Oliver Glasner

Barring a short loan spell at LASK in the 2003/04 season, Oliver Glasner spent his entire 19-year playing career at SV Ried in his native Austria - from 1992 to 2011 - where he holds the record for the most appearances made for the club, with 571 in all competitions.

During his time at SV Ried, he won the Austria Cup in 1998 and 2011, as well as helping the club to achieve promotion to the Austrian Bundesliga in 1994/95 and a decade later in 2004/05.

In August 2011, he suffered a brain haemorrhage and, after an operation, was advised to end his playing career at the age of 36. After his enforced retirement, Glasner spent two years as assistant to Roger Schmidt at Red Bull Salzburg.

When Schmidt later left for Bayer Leverkusen, Glasner made his return to SV Ried. During his one and only season in charge, the club secured a fourth-straight sixth-placed finish. Next was a return to LASK. Glasner spent four seasons at Raiffeisen Arena and enjoyed plenty of success.

The club finished second in the second tier in his first season and were promoted as champions in 2016/17. Back in the top flight, they then finished fourth, before finishing second in 2018/19 - their highest finish since winning the Staatsliga in 1965.

Glasner then moved across the border to Wolfsburg in July 2019, where he found reasonable success and, two years later, joined Eintracht Frankfurt.

He could not guide the German club to any higher than seventh in his two seasons in charge, though he did mastermind the Europa League triumph in 2021/22, where Frankfurt beat Barcelona, West Ham and Rangers on their way to glory.

He departed Frankfurt in the summer of 2023 and joined Crystal Palace as Roy Hodgson's successor in February 2024.



World Health Organization

COVID-19 Epidemiological Update - published 17 January 2025

At the country level, the highest numbers of new 28-day cases were reported from the Russian Federation (118,986 new cases; +24%), Greece (11,404 new cases; -9%), Czechia (6,220 new cases; -57%), New Zealand (5,944 new cases; +44%), and the United Kingdom (5,494 new cases; -49%). The highest numbers of new 28-day deaths were reported from the United States of America (1,876 new deaths; -25%), followed by the Russian Federation (203 new deaths; -3%), Sweden (169 new deaths; -5%), Greece (123 new deaths; +38%), and Poland (39 new deaths; -43%).

European Region

The SARS-CoV-2 weekly percent test positivity from systematically conducted virological surveillance in the European Region changed from 4.5% to 4.0% across 41 countries who reported at least once during the four-week period. Eight countries reported an increase of more than 2.5% in percent test positivity during the four-week reporting period: Poland (from 16.7% to 27.6%), Czechia (from 3.1% to 7.6%), Russian Federation (from 2.7% to 6.9%), Slovenia (from 5.1% to 9.1%), Estonia (from 4.8% to 8.7%), Georgia (from 0% to 3.7%), Portugal (from 0% to 3.2%), and Slovakia (from 8.1% to 11.1%). Four countries showed elevated SARS-CoV-2 activity (10% or more) in the final week: Poland (28%), Lithuania (12%), Switzerland (11%), and Slovakia (11%). During the reporting period, the weekly average number of specimens tested was 4,810.

The Region reported over 173,000 new cases, a 7% decrease as compared to the previous 28-day period. Two (3%) of the 61 countries for which data are available reported increases in new cases of 20% or greater, with the highest proportional increases observed in Liechtenstein (five vs three new cases; +67%), and the Russian Federation (118,986 vs 96,108 new cases; +24%). The highest numbers of new cases were reported from the Russian Federation (118,986 new cases; 81.5 new cases per 100,000; +24%), Greece (11,404 new cases; 106.4 new cases per 100,000; -9%), and Czechia (6,220 new cases; 58.2 new cases per 100,000; -57%).

The number of new 28-day deaths in the Region decreased by 25% compared to the previous 28-day period, with 662 new deaths reported. The highest numbers of new deaths were reported from the Russian Federation (203 new deaths; <1 new death per 100,000; -3%), Sweden (169 new deaths; 1.6 new deaths per 100 000; -5%), and Greece (123 new deaths; 1.1 new deaths per 100,000; +38%)

SARS-CoV-2 variants

WHO is currently tracking several SARS-CoV-2 variants, including:

- Variant of interest (VOI): JN.1
- Variants under monitoring (VUMs): JN.1.18, KP.2, KP.3, KP.3.1.1, LB.1 and XEC

As many countries discontinue COVID-19-specific reporting and integrate it into respiratory disease surveillance, WHO will use all available sources to continue monitoring the COVID-19 epidemiological situation, especially data on illness and impact on health systems. COVID-19 remains a major threat, and WHO urges Member States to maintain, not dismantle, their established COVID-19 infrastructure. It is crucial to sustain early warning, surveillance and reporting, variant tracking, early clinical care provision, administration of vaccine to high-risk groups, improvements in ventilation, and regular communication.



Ministers in Davos to spotlight UK's investment offer to global business leaders

Ministers will be banging the drum for Britain at Davos this week, with the most visible UK Government presence in recent years pitching the UK's investment offer to top business chiefs.

Chancellor Rachel Reeves and Business and Trade Secretary Jonathan Reynolds will meet with leading members of the global business community to encourage them to put their money into the UK and back British business.

They will highlight the UK's political and economic stability, making us an attractive place to do business. This is backed by an unashamedly pro-business government that is slashing burdensome regulation, launching ambitious planning reform, and leveraging our trade relationships with Europe, America, Asia, the Gulf and beyond to help businesses use Britain as their base to connect with exciting global markets.

The visit will continue to deliver on the government's number one mission to grow the economy and raise living standards for working people, coming days after the IMF revised their growth forecast for the UK economy upwards for next year.

The government's Davos attendance also follows a survey from consultancy firm PwC, who on Monday

ranked the UK as the second most investible location globally after the U.S. – the first time the UK has secured this position in the 28-year history of the survey.

Chancellor of the Exchequer Rachel Reeves said:

“Business leaders and investors need to know that the UK is where their businesses will flourish, so I'm meeting them face to face in Davos to make our case. We are one of the most exciting places in the world for them to put their money, with a history of innovation, a skilled workforce and a stable government that backs business.”

“I will not rest until the UK economy is growing and this government is delivering on its Plan for Change, so we can put more money in people's pockets. The time to invest in Britain is now.”



The Chancellor will be on the ground at Davos on Wednesday 22 and Thursday 23 January. She and the Business Secretary will speak at a Bloomberg event on Wednesday morning. She will also speak at the Country Strategic Dialogue alongside Ruth Porat, president and CIO of Google and Julie Sweet, CEO of Accenture, to over 80 global CEOs and business leaders from across tech, financial services and green industries. In the evening the Chancellor will attend the Global Goals dinner.



On Thursday, the Chancellor will take part in a fireside chat with the Wall Street Journal to an audience of business leaders, following which she will speak at an economy roundtable with fellow finance ministers on global issues. The Chancellor will also speak at a lunch hosted by the CBI to an audience of 50 senior executives from UK-based businesses and international investors.

Meetings are planned with a wide range of CEOs and business leaders, including Jamie Dimon, CEO of JP Morgan, Jo Taylor, president of the Ontario Teachers' Pension Plan, and David Solomon, CEO of Goldman Sachs – amongst others.

The Business and Trade Secretary will have bilateral meetings with many of his international trade counterparts, including Robert Habeck, Vice-Chancellor of Germany, Maros Sefcovic, Executive Vice-President of the European Commission and WTO Director-General Dr Ngozi Okonjo-Iweala. He will also meet with a range of businesses and investors, including AON; Anglo American; AWS; Carlsberg; Capgemini; Honeywell; RWE; and SABIC.

Business and Trade Secretary Jonathan Reynolds said:

"Britain is back in business under this government, and our Plan for Change is already delivering for working people.

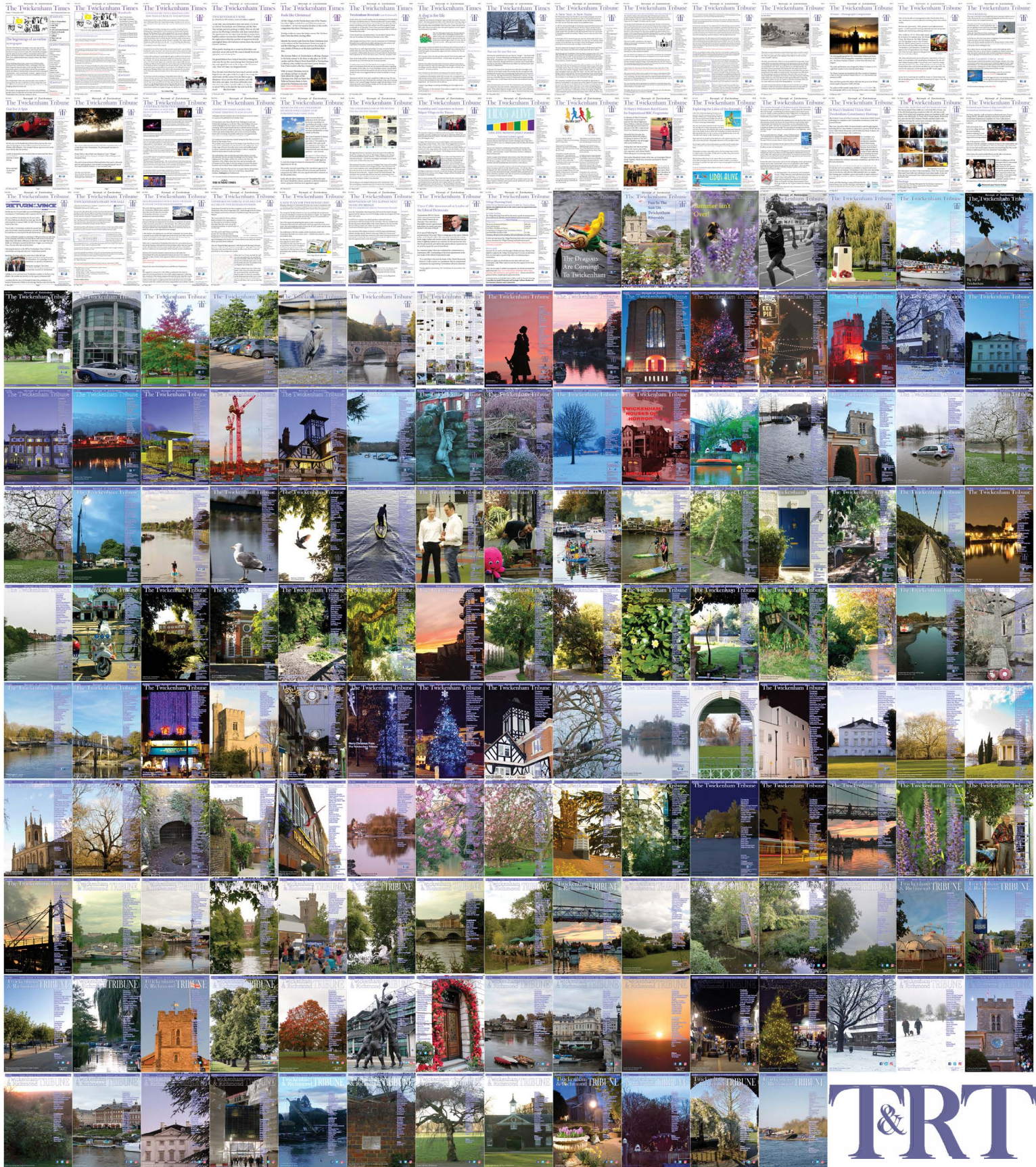
"The UK is the most connected market on earth, and we will continue to be the home for innovative businesses looking to face outwards to the world. We've lifted barriers to investment and secured £63 billion at the International Investment Summit, creating thousands of jobs in the process. These investments promise better wages, stronger communities, and better services and I'll be at Davos to build on this momentum."

The UK Government's presence at Davos will also be the most visible in years, with print and out of home marketing promoting the UK's connectivity, openness and opportunity to coincide with the summit.



HM Treasury

429 editions of the **Twickenham & Richmond Tribune** online - Lots to read: News, Reviews, History, Sports and On-going Sagas in the Borough of Richmond upon Thames



Half Page

Quarter Page
Landscape

Quarter Page Portrait

Eighth Page

Eighth Page
Landscape

Example advert sizes shown above

Thousands read The Twickenham & Richmond Tribune

If you are reading this you could be advertising your business with
The Twickenham & Richmond Tribune. Community rates are
available

Contact: advertise@TwickenhamTribune.com

View ad details at www.TwickenhamTribune.com/advertise

Contact

contact@TwickenhamTribune.com
letters@TwickenhamTribune.com
advertise@TwickenhamTribune.com



Published by:

Twickenham & Richmond Tribune (in association with World InfoZone Limited)

Registered in England & Wales

Reg No 10549345

The Twickenham Tribune is registered with the ICO under the Data Protection Act, Reg No ZA224725

©Twickenham & Richmond Tribune. All rights reserved. No part of this publication may be used or reproduced without the permission of Twickenham & Richmond Tribune. While we take reasonable efforts, this online newspaper cannot be held responsible for the accuracy or reliability of information. The views and opinions in these pages do not necessarily represent those of The Twickenham & Richmond Tribune.

[Terms & Conditions](#)